

Bachelor of Arts (Honours) in PSYCHOLOGY (BA-PSY)

心理學（榮譽）文學士



香港恒生大學
THE HANG SENG UNIVERSITY
OF HONG KONG



心理學（榮譽）文學士
BA (HONS) IN PSYCHOLOGY

香港恒生大學
THE HANG SENG UNIVERSITY
OF HONG KONG

Programme Advantages

課程優勢

The Bachelor of Arts (Honours) in Psychology (BA-PSY) Programme adopts the unique “Liberal + Professional” education model to equip students with comprehensive foundational knowledge and skills in psychology. “Liberal” means that the Programme adopts a broad-based and cross-disciplinary approach to connect knowledge domains, facilitate thinking, and solve problems. “Professional” means that while the Programme is broad-based and cross-disciplinary, it also has professional orientation elements which aim at equipping students with the competencies to enter into relevant professions in the future.

心理學（榮譽）文學士（BA-PSY）課程採用獨特的「博雅+專業」教育模式，教授學生全面的心理學基礎知識和實用技能。「博雅」是指本課程以廣泛及跨學科的方式來連接不同知識領域、啟發思考和解決問題。「專業」是指本課程雖然廣泛而跨學科，但亦包含專業導向元素，以助學生獲得特定行業所需的專業知識和技能，為未來就業做好準備。



A distinctive feature of the Programme is that, in addition to covering and integrating all major areas in psychology and their cognate disciplines, it provides three specialisations, Educational and Clinical, Business and Technology, and Neuroscience and Health. These specialisations not only develop students' interests and capacities in psychological applications, but also enhance their employability and readiness for further professional training.

本課程的特色之一，在於除了均衡地涵蓋和整合各個主要心理學範疇及其相關學科之外，亦提供三個專修範疇供學生選讀，包括「教育和臨床」、「商業和科技」、以及「神經科學和健康」。這三個專修範疇不但能培養學生在心理學應用範疇的興趣和能力，更能幫助他們提升就業競爭力，並為專業深造做好準備。



Curriculum Design

課程設計

The four-year curriculum design is as follows:

四年課程設計如下：

YEAR ONE 一年級	YEAR TWO 二年級	YEAR THREE 三年級	YEAR FOUR 四年級
Freshman Chinese 大一國文	English for Academic Purposes 學術英語	English for Professional Communication 專業英語傳意	GE Elective 通識選修
Chinese Lit Appreciation 中國文學欣賞	Applied Putonghua 應用普通話	GE Elective 通識選修	GE Elective 通識選修
University Eng (I) 大學英語 (一)	GE Elective 通識選修	GE Elective 通識選修	Contemporary Issues in Psychology 當代心理學課題
University Eng (II) 大學英語 (二)	GE Elective 通識選修	Abnormal Psychology 異常心理學	Psychology Elective 心理學選修
Probability and Statistics 概率統計學	Contemporary Information Technologies 當代資訊科技	Learning and Behaviour 學習與行為	Psychology Elective 心理學選修
Perspectives on GE 通識概論	Principles of Marketing 市場學原理	Personality Psychology 人格心理學	Psychology Elective 心理學選修
Principles of Management 管理學原理	Statistics in Psychology 心理統計學	Psychology Elective 心理學選修	Psychology Elective [^] 心理學選修 [^]
Introduction to Psychology 心理學導論	Biological Psychology 生物心理學	Psychology Elective 心理學選修	Psychology Elective [^] 心理學選修 [^]
Research Methods in Psychology 心理學研究方法	Social Psychology 社會心理學	Psychology Elective 心理學選修	Free Elective 自由選修
Developmental Psychology 發展心理學	Cognitive Psychology 認知心理學	Psychology Elective 心理學選修	Free Elective 自由選修
		Free Elective 自由選修	

[^] Eligible students may take either Psychology Thesis or Psychology Practicum in lieu of 2 Psychology Electives.

[^] 合資格的學生可選讀心理學論文或心理學實習，取代2個心理學選修單元。

LIST OF PSYCHOLOGY ELECTIVES

心理學選修列表

Educational and Clinical Specialisation 教育和臨床專修範疇

- Educational Psychology 教育心理學
- Clinical and Counselling Psychology 臨床與輔導心理學
- Child and Adolescent Counselling 兒童與青少年輔導
- Psychological Testing and Assessment 心理測驗與評估

Business and Technology Specialisation 商業和科技專修範疇

- Work and Organisational Psychology 工作與組織心理學
- Consumer Psychology and Behaviour 消費心理與行為學
- Cyberpsychology 網路心理學
- Psychology of Human-Technology Interaction 人類科技交互心理學

Neuroscience and Health Specialisation 神經科學和健康專修範疇

- Neuropsychology 神經心理學
- Sport Psychology 運動心理學
- Positive Psychology 正向心理學
- Psychology of Love and Sex 情愛心理學



Free Electives (3 Modules)
自由選修 (3 單元)

7.5%

General Education and
Generic Skills
(16 Modules)
共同核心課程 (16 單元)
37.5%

5%

Psychology Speciality
(20 Modules)
心理學專修 (20 單元)
50%

Business Education
(2 Modules)
商業教育 (2 單元)

The curriculum design is well-balanced between liberal and professional education.

課程設計在博雅和專業教育之間取得平衡。



Professional Recognition

專業承認

Graduates with good honours will be eligible to apply for Graduate Membership of local and overseas psychological societies.

成績良好的畢業生有資格申請成為本港及海外心理學會學位會員。



Career Prospects

事業前景

Employment pathways of graduates are not confined to specific industries or enterprises as the knowledge and skills of psychology can be applied in various job positions.

畢業生能在不同的工作職位應用心理學的知識和技能，因此就業出路並不局限於某些特定的行業。

Job positions that graduates are competent to take up include:

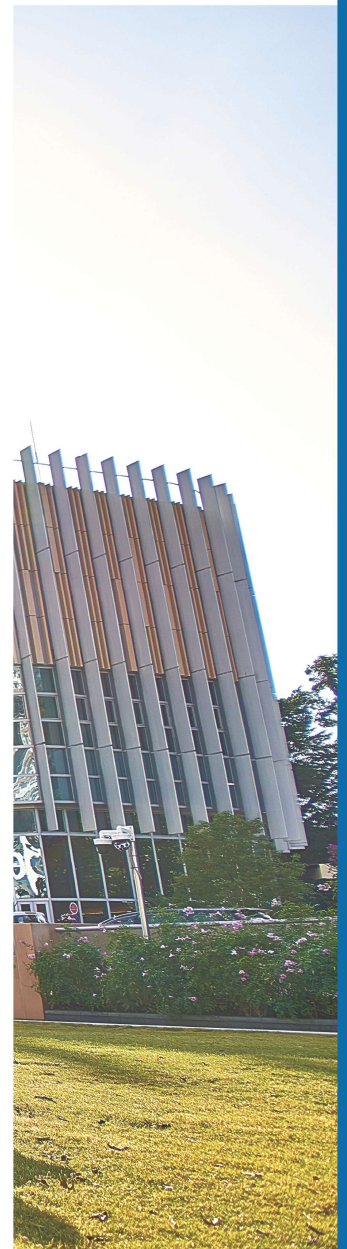
- Consumer Behaviour Analyst
- User Experience Analyst
- Management Trainee
- Human Resource Personnel
- Behavioural Therapist
- Psychological Counsellor
- Psychological Assistant
- Play Specialist
- Programme Worker
- Welfare Worker
- Teaching Assistant
- Research Assistant
- Administrative Officer
- Executive Officer

畢業生能勝任不同工作職位例如：

- 消費行為分析師
- 用戶體驗分析師
- 見習行政人員
- 人力資源人員
- 行為治療師
- 心理輔導員
- 心理學助理
- 遊戲師
- 活動幹事
- 福利工作員
- 教學助理
- 研究助理
- 政務主任
- 行政主任

Graduates can also pursue postgraduate programmes in Psychology and other related disciplines locally or overseas.

畢業生亦可選擇於本港或海外繼續深造心理學或相關科目。





Enquires on Application and Admission 入學申請查詢

For any enquiries about the programme, please contact the Department of Social Science.
如有任何關於本課程之查詢，歡迎聯絡社會科學系。

Tel 電話 : 3963 5710
Programme Email 課程查詢 : ba-psy@hsu.edu.hk
Admission Email 入學查詢 : ugadmission@hsu.edu.hk
Website 網頁 : <https://ssc.hsu.edu.hk/programmes/bachelor-of-arts-in-psychology/>
Address 地址 : Hang Shin Link, Siu Lek Yuen, Shatin, NT
新界沙田小瀝源行善里

In case of any discrepancy between the English and Chinese versions of the contents of this pamphlet, the English version shall prevail.

本課程簡介內容以英文版本為準，中文譯本僅供參考。

The Hang Seng University of Hong Kong is incorporated in Hong Kong with limited liability by guarantee.
香港恒生大學是一間於香港註冊成立之擔保有限公司。

Information updated as of November 2022.

有關資料更新至2022年11月。

QF Level: 5

QR Registration No.: 21/000421/L5

Registration Validity Period: 01/09/2021 to 31/08/2026

